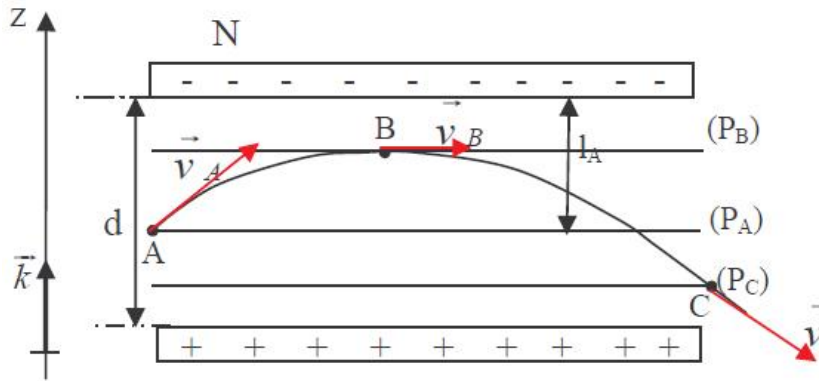


www.pc-lycee.com

05



$l_C = 25\text{mm}$ $l_B = 4\text{mm}$ $l_A = 16\text{mm}$

$U_{PN} = 10^3\text{V}$

$d = 30\text{cm}$

$v_A = 1,39 \cdot 10^7 \text{ m.s}^{-1}$

$-e = -1,6 \cdot 10^{-19} \text{ C}$

$m_e = 9,1 \cdot 10^{-31} \text{ kg}$

C B

- .1
- .2
- .3