

10

M₁.

$r_1=4$

r

$E_2 = 4,5V$

$E_1 = 6V$

E

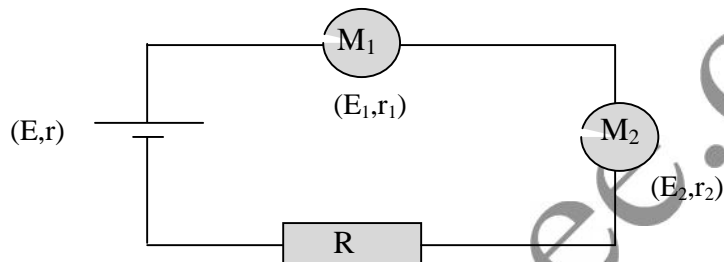
$R=17$

M₂

$r_2=2,5$

$I=0,57A$

$P_J = 13,5W$

M₂ M₁Pe₃ Pe₂ Pe₁

. r .1

.1

. Pe₃ Pe₂ Pe₁ .2

.2

.3

.3

.3.1

.3.2

.4

. E .5

.5